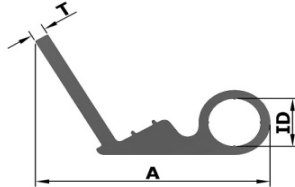
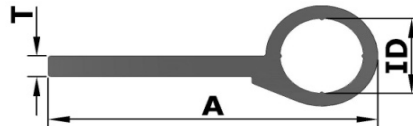


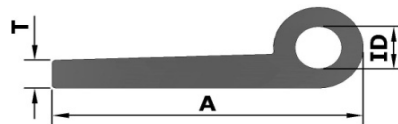
MISC HARDWARE



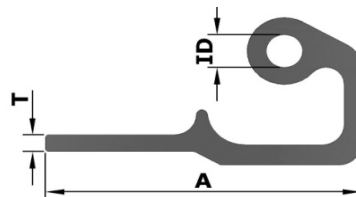
Section No.	Dimension in mm			Weight kg/M.	Weight kg/12'.
	A	ID	T		
740-0001	51.30	11.60	3.20	0.830	3.040



Section No.	Dimension in mm			Weight kg/M.	Weight kg/12'.
	A	ID	T		
740-0002	45.80	11.60	3.20	0.512	1.875

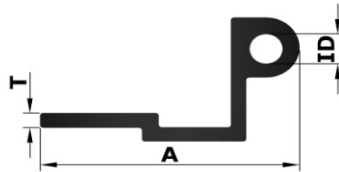


Section No.	Dimension in mm			Weight kg/M.	Weight kg/12'.
	A	ID	T		
740-0003	37.00	5.60	3.70	0.466	1.700

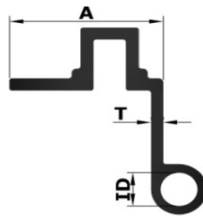


Section No.	Dimension in mm			Weight kg/M.	Weight kg/12'.
	A	ID	T		
790-0007	42.30	4.90	2.50	0.641	2.347

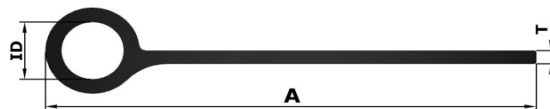
MISC HARDWARE



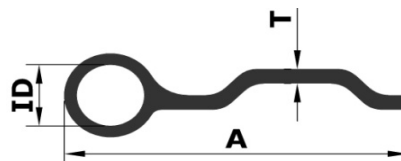
Section No.	Dimension in mm			Weight kg/M.	Weight kg/12'.
	A	ID	T		
740-0006	46.60	6.00	2.90	0.660	2.400 - 2.500



Section No.	Dimension in mm			Weight kg/M.	Weight kg/12'.
	A	ID	T		
740-0007	33.00	8.00	2.60	0.772	2.800 - 2.900

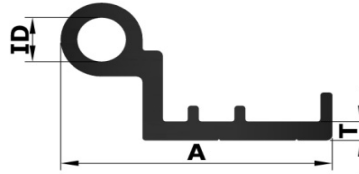


Section No.	Dimension in mm			Weight kg/M.	Weight kg/12'.
	A	ID	T		
740-0008	34.75	5.16	1.52	0.229	0.840 - 0.940

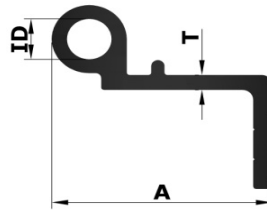


Section No.	Dimension in mm			Weight kg/M.	Weight kg/12'.
	A	ID	T		
740-0009	33.00	6.50	1.52	0.190	0.690 - 0.790

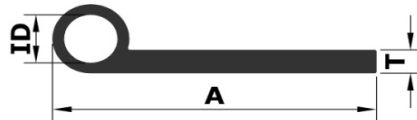
MISC HARDWARE



Section No.	Dimension in mm			Weight kg/M.	Weight kg/12'.
	A	ID	T		
741-0017	45.50	8.20	3.50	0.761	2.750-2.850

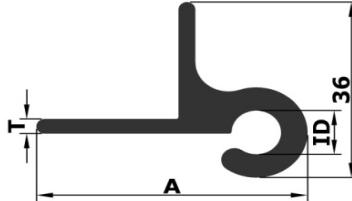


Section No.	Dimension in mm			Weight kg/M.	Weight kg/12'.
	A	ID	T		
741-0018	40.40	8.20	3.00	0.736	2.650-2.750

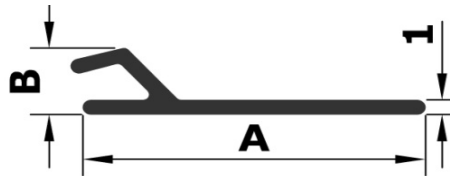


Section No.	Dimension in mm			Weight kg/M.	Weight kg/12'.
	A	ID	T		
740-0010	33.75	5.60	2.70	0.256	0.970-1.020
740-0011	37.00	5.60	3.80	0.466	1.700-1.800
740-0014	33.80	5.50	1.90	0.203	0.750-0.850
740-0015	34.20	6.20	2.60	0.262	0.950-1.000
740-0016	35.60	5.90	3.30	0.345	1.250-1.300

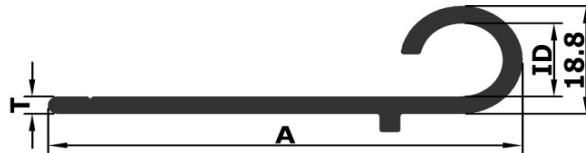
MISC HARDWARE



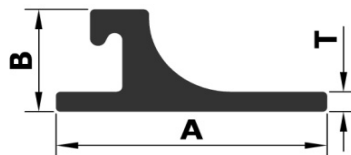
Section No.	Dimension in mm			Weight kg/M.	Weight kg/12'.
	A	ID	T		
741-0019	49.00	9.00	3.00	1.015	3.710-3.810



Section No.	Dimension in mm			Weight kg/M.	Weight kg/12'.
	A	B	T		
741-0020	22.80	5.00	1.10	0.091	0.330-0.380

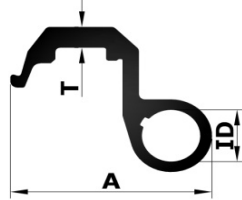


Section No.	Dimension in mm			Weight kg/M.	Weight kg/12'.
	A	ID	T		
741-0021	73.00	12.80	3.00	0.833	3.040-3.140

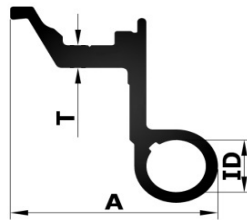


Section No.	Dimension in mm			Weight kg/M.	Weight kg/12'.
	A	B	T		
741-0022	24.50	10.40	2.00	0.253	0.920-0.970

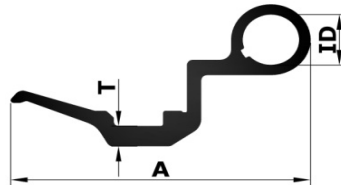
MISC HARDWARE



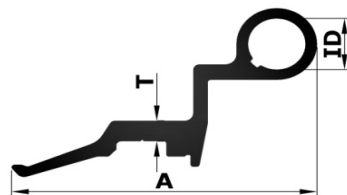
Section No.	Dimension in mm			Weight kg/M.	Weight kg/12'.
	A	ID	T		
741-0023	34.50	10.00	4.00	0.569	1.950-2.200



Section No.	Dimension in mm			Weight kg/M.	Weight kg/12'.
	A	B	T		
741-0024	34.80	10.00	4.00	0.629	2.150-2.450

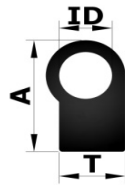


Section No.	Dimension in mm			Weight kg/M.	Weight kg/12'.
	A	ID	T		
741-0025	28.10	10.00	4.00	0.670	2.300-2.0600

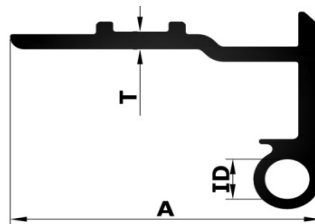


Section No.	Dimension in mm			Weight kg/M.	Weight kg/12'.
	A	B	T		
741-0026	31.00	10.00	4.00	0.711	2.440-2.770

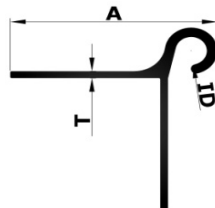
MISC HARDWARE



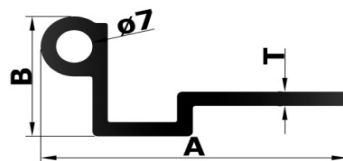
Section No.	Dimension in mm			Weight kg/M.	Weight kg/12'.
	A	ID	T		
741-0027	19.00	8.00	10.00	0.384	1.400-1.500



Section No.	Dimension in mm			Weight kg/M.	Weight kg/12'.
	A	ID	T		
741-0028	55.25	39.50	4.00	0.980	3.400-3.800

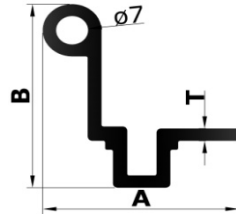


Section No.	Dimension in mm			Weight kg/M.	Weight kg/12'.
	A	ID	T		
741-0029	67.00	10.20	2.50	1.094	3.660-4.150

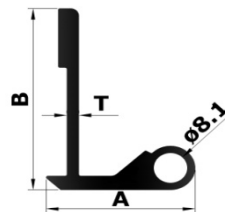


Section No.	Dimension in mm			Weight kg/M.	Weight kg/12'.
	A	B	T		
740-0030	58.70	25.60	3.00	0.811	2.845-3.100

MISC HARDWARE



Section No.	Dimension in mm			Weight kg/M.	Weight kg/12'.
	A	B	T		
740-0031	42.80	45.00	3.00	0.905	3.270-3.450



Section No.	Dimension in mm			Weight kg/M.	Weight kg/12'.
	A	ID	T		
740-0032	35.86	49.00	2.90	0.945	3.280-3.640