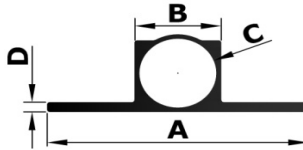
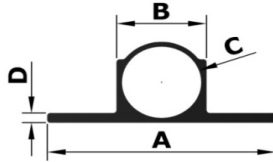


## TOWER BOLTS



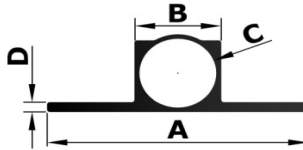
Section No.	Dimension in mm				Weight kg/M.	Weight Range kg/12'
	A	B	C	D		
700-0044	24.00	9.80	8.60	0.80	0.112	0.400-0.450
700-0097	29.60	10.96	9.70	0.70	0.13	0.475-0.525
700-0015	30.00	11.00	9.50	1.20	0.160	0.580-0.610
700-0049	31.00	11.50	9.50	1.25	0.201	0.700-0.750
700-0018	30.40	12.00	10.50	0.75	0.156	0.600-0.625
700-0075	30.80	11.60	10.20	1.60	0.191	0.700-0.750
700-0029	35.00	11.80	10.80	1.05	0.160	0.550-0.600
700-0004	35.00	12.20	11.00	0.75	0.157	0.560-0.610
700-0087	31.00	11.90	10.80	1.35	0.170	0.625-0.675
700-0014	31.00	12.20	10.80	1.48	0.190	0.675-0.710
700-0060	31.50	12.60	11.00	1.25	0.197	0.720-0.760
700-0066	31.50	13.08	11.40	1.50	0.209	0.770-0.800
700-0067	31.50	12.90	11.10	1.25	0.209	0.760-0.800
700-0093	30.80	12.00	10.20	1.70	0.218	0.800-0.850
700-0086	31.70	12.50	10.50	1.50	0.227	0.830-0.880
700-0033	32.00	13.30	10.90	1.20	0.244	0.880-0.940
700-0069	31.50	12.90	10.80	1.50	0.235	0.860-0.900
700-0058	31.50	13.10	11.10	1.60	0.243	0.880-0.960
700-0037	35.00	13.40	11.00	1.30	0.262	0.900-1.000
700-0006	32.00	13.55	11.15	1.40	0.258	0.940-0.990
700-0034	36.00	14.00	11.00	1.90	0.333	1.190-1.290
700-0002	35.00	12.50	11.50	1.20	0.180	0.640-0.690
700-0114	35.40	12.51	11.30	1.49	0.207	0.760-0.810
700-0003	36.50	12.90	11.50	1.80	0.241	0.860-0.910
700-0101	38.50	12.70	11.40	1.20	0.223	0.800-0.850
700-0043	35.50	13.40	11.30	1.40	0.240	0.880-0.960
700-0024	38.60	12.80	11.40	1.60	0.255	0.900-0.950
700-0092	36.00	13.40	11.50	1.60	0.258	0.950-1.000
700-0073	35.80	12.80	11.60	1.60	0.223	0.800-0.875
700-0017	37.00	14.20	12.00	1.90	0.305	1.110-1.150
700-0123	37.00	12.93	11.50	1.10	0.220	0.800-0.850
700-0052	37.20	14.80	12.20	2.00	0.344	1.250-1.325

## TOWER BOLTS



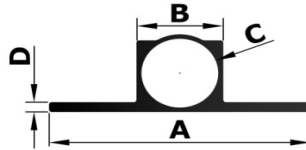
Section No.	Dimension in mm				Weight kg/M.	Weight Range kg/12'
	A	B	C	D		
700-0035	22.80	9.70	8.50	0.60	0.096	0.330-0.400
700-0081	29.00	10.40	9.60	0.50	0.094	0.340-0.400
700-0023	29.00	10.60	9.60	0.65	0.112	0.400-0.470
700-0027	29.80	11.16	9.70	0.85	0.148	0.525-0.575
700-0005	29.70	11.40	10.00	1.05	0.157	0.565-0.610
700-0064	30.15	11.30	9.70	1.15	0.168	0.620-0.650
700-0013	30.15	11.30	9.60	1.20	0.176	0.650-0.700
700-0065	30.15	11.50	9.70	1.30	0.184	0.680-0.720
700-0136	30.60	11.50	10.20	1.25	0.165	0.600-0.650
700-0056	29.80	11.70	9.90	1.40	0.192	0.690-0.720
700-0022	33.00	11.40	10.40	0.65	0.126	0.450-0.475
700-0032	33.00	11.70	10.70	0.60	0.126	0.440-0.480
700-0080A	32.00	11.80	11.00	0.55	0.116	0.420-0.470
700-0001	34.30	12.00	11.00	0.80	0.141	0.500-0.535
700-0046	34.30	12.00	11.00	1.00	0.154	0.530-0.580
700-0140	35.20	12.40	11.30	1.35	0.188	0.680-0.740
700-0095	33.10	14.40	10.80	2.10	0.364	1.325-1.375
700-0050	31.50	13.20	11.30	1.50	0.228	0.800-0.850
700-0026	35.40	12.80	11.30	1.50	0.222	0.810-0.860
700-0090	35.80	11.70	11.70	1.45	0.198	0.725-0.775
700-0132	38.00	16.30	12.80	2.50	0.444	1.630-1.780

## TOWER BOLTS



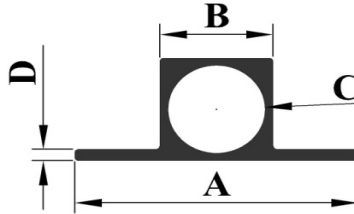
Section No.	Dimension in mm				Weight kg/M.	Weight Range kg/12'
	A	B	C	D		
700-0052	37.20	14.80	12.20	2.00	0.344	1.250-1.325
700-0016	37.20	14.90	12.20	2.10	0.356	1.325-1.360
700-0085	37.70	16.10	12.50	2.40	0.443	1.630-1.670
700-0048	43.00	14.40	12.80	1.90	0.319	1.150-1.200
700-0115	44.10	15.40	13.10	1.90	0.389	1.425-1.500
700-0042	37.50	16.50	13.30	2.40	0.428	1.600-1.700
700-0021	38.00	17.00	12.70	2.40	0.503	1.800-1.850

## TOWER BOLTS



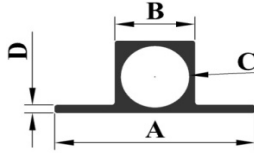
New Section	Dimension in mm				Weight kg/M.	Weight Range kg/12'
	A	B	C	D		
700-0200	30.00	10.70	9.50	1.05	0.150	0.550-0.600
700-0201	30.00	11.20	9.70	1.13	0.165	0.600-0.650
700-0202	30.00	11.40	9.70	1.20	0.179	0.650-0.700
700-0203	31.00	11.50	9.70	1.15	0.191	0.700-0.750
700-0204	31.00	11.90	10.80	1.20	0.164	0.600-0.650
700-0205	31.00	12.20	10.80	1.31	0.184	0.675-0.725
700-0206	31.50	12.60	11.00	1.20	0.198	0.725-0.775
700-0207	31.50	12.70	11.00	1.42	0.212	0.775-0.825
700-0208	31.50	12.50	10.50	1.43	0.226	0.825-0.875
700-0241	31.50	12.90	10.80	1.50	0.235	0.850-0.900
700-0209	35.00	12.50	11.30	1.15	0.184	0.675-0.725
700-0210	35.20	12.50	11.30	1.37	0.198	0.725-0.775
700-0211	37.00	13.80	12.00	1.58	0.266	0.975-1.075
700-0212	37.00	14.10	12.00	1.73	0.293	1.075-1.150
700-0213	37.00	14.30	12.00	1.87	0.314	1.150-1.250
700-0214	37.10	14.76	12.20	1.93	0.341	1.250-1.350
700-0215	37.20	14.90	12.20	2.21	0.369	1.350-1.450
700-0216	37.50	15.90	12.50	2.20	0.423	1.550-1.625

## TOWER SQUARE



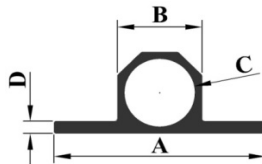
Section No.	Dimension in mm				Weight kg/M.	Weight Range kg/12'
	A	B	C	D		
700-0059	29.80	11.80	11.00	0.90	0.163	0.600-0.650
700-0089	31.00	11.80	10.90	1.05	0.178	0.650-0.700
700-0070	31.00	12.10	10.90	1.10	0.199	0.720-0.760
700-0039	31.00	12.10	10.80	1.15	0.206	0.760-0.810
700-0071*	31.00	12.40	10.90	1.20	0.223	0.810-0.850
700-0072	31.00	12.40	10.90	1.40	0.233	0.850-0.890
700-0038	31.00	12.40	10.80	1.40	0.237	0.870-0.920
700-0020	31.30	12.90	11.00	1.20	0.251	0.900-0.950
700-0012	31.50	12.60	10.80	1.40	0.252	0.925-0.975
700-0019	36.85	15.25	12.50	1.95	0.409	1.475-1.525
700-0057	37.10	14.80	12.40	1.60	0.361	1.300-1.350

## TOWER BOLTS



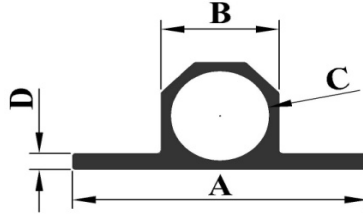
New Section No.	Dimension in mm				Weight kg/M.	Weight Range kg/12'
	A	B	C	D		
700-0217	29.75	11.90	10.80	0.65	0.167	0.650-0.700
700-0218	31.00	12.10	10.90	0.90	0.192	0.700-0.750
700-0219	31.00	12.30	10.90	1.15	0.217	0.800-0.850
700-0220	31.00	12.40	10.90	1.32	0.232	0.850-0.900
700-0221	31.00	12.50	10.80	1.37	0.246	0.900-0.950
700-0222	37.00	14.00	12.40	1.40	0.294	1.075-1.150
700-0223	37.00	14.20	12.40	1.50	0.315	1.150-1.250
700-0224	37.00	14.60	12.40	1.45	0.342	1.250-1.350

## TOWER HEX



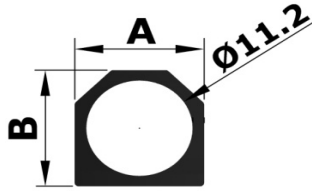
New Section No.	Dimension in mm				Weight kg/M.	Weight Range kg/12'
	A	B	C	D		
700-0225	31.50	12.40	10.80	1.60	0.218	0.800-0.850
700-0226	36.50	14.00	12.20	2.10	0.300	1.100-1.260
700-0227	36.50	14.30	12.20	2.25	0.328	1.200-1.300
700-0228	36.50	14.60	12.20	2.35	0.355	1.300-1.400

## TOWER HEX

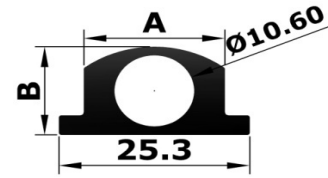


Section No.	Dimension in mm				Weight kg/M.	Weight Range kg/12'
	A	B	C	D		
700-0011	29.00	10.00	9.00	0.70	0.110	0.400-0.450
700-0082	29.00	10.40	9.60	0.50	0.096	0.350-0.400
700-0028	29.00	10.60	9.60	0.65	0.114	0.410-0.460
700-0143	29.40	12.10	10.60	0.80	0.162	0.590-0.650
700-0030	30.80	11.60	10.20	1.25	0.179	0.650-0.700
700-0122	29.40	10.70	9.40	0.80	0.135	0.480-0.525
700-0134	30.50	11.50	10.20	1.15	0.166	0.600-0.650
700-0031	31.00	12.00	10.50	1.80	0.213	0.750-0.800
700-0045	31.50	11.70	10.00	1.70	0.219	0.800-0.850
700-0088	31.50	12.50	10.80	1.70	0.228	0.840-0.880
700-0096	32.00	14.00	10.80	1.80	0.323	1.100-1.200
700-0040	32.20	11.80	10.40	1.50	0.196	0.700-0.750
700-0036	34.50	12.00	11.00	0.75	0.145	0.500-0.550
700-0025	35.00	12.20	11.00	0.80	0.159	0.560-0.600
700-0009*	35.00	12.50	11.50	1.05	0.167	0.610-0.650
700-0124	35.00	12.50	11.50	1.20	0.179	0.650-0.700
700-0091	35.00	12.90	11.70	1.20	0.195	0.715-0.775
700-0010	35.50	12.20	11.00	0.75	0.150	0.570-0.620
700-0008	36.00	12.80	11.40	1.70	0.234	0.840-0.880
700-0074	35.80	12.80	11.60	1.70	0.224	0.810-0.885
700-0135	35.80	14.00	12.60	1.65	0.247	0.900-1.000
700-0142	36.00	13.37	11.80	1.60	0.246	0.900-1.000
700-0047	36.00	14.40	12.60	1.90	0.285	1.000-1.100
700-0041	36.30	14.60	12.60	2.50	0.335	1.210-1.260
700-0007	38.00	15.20	12.70	2.30	0.373	1.340-1.400
700-0133	36.50	14.80	12.20	2.35	0.347	1.250-1.400

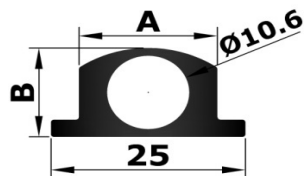
## TOWER BOLT



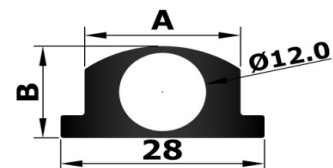
Section No.	Dimension in mm		Weight Kg/M.	W/T Range Kg/12'
	A	B		
700-0051	13.60	13.60	0.192	0.680-0.780



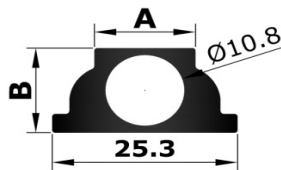
Section No.	Dimension in mm		Weight Kg/M.	W/T Range Kg/12'
	A	B		
700-0106	18.30	13.10	0.408	1.500-1.575
700-0062	18.70	13.10	0.423	1.550-1.650



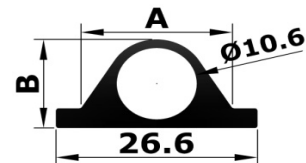
Section No.	Dimension in mm		Weight Kg/M.	W/T Range Kg/12'
	A	B		
700-0104	17.00	12.60	0.342	1.250-1.325
700-0105	17.20	12.80	0.360	1.325-1.400
700-0077	17.80	12.80	0.380	1.400-1.500
700-0121	15.80	12.60	0.316	1.150-1.250



Section No.	Dimension in mm		Weight Kg/M.	W/T Range Kg/12'
	A	B		
700-0079	21.40	14.00	0.499	1.820-1.920



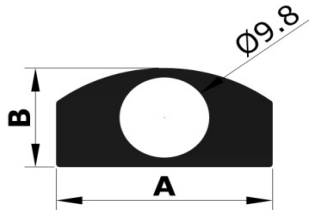
Section No.	Dimension in mm		Weight Kg/M.	W/T Range Kg/12'
	A	B		
700-0102	13.20	12.60	0.385	1.400-1.500
700-0100	13.40	12.65	0.291	1.430-1.530
700-0103	13.20	12.90	0.402	1.475-1.550
700-0076	13.80	12.90	0.424	1.500-1.650



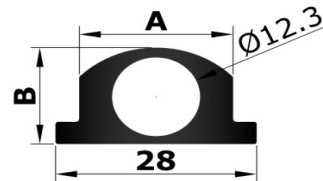
Section No.	Dimension in mm		Weight Kg/M.	W/T Range Kg/12'
	A	B		
700-0078	20.00	13.10	0.334	1.220-1.320



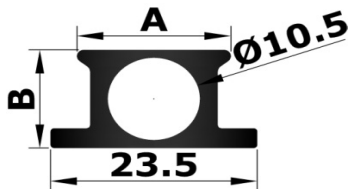
## TOWER BOLT



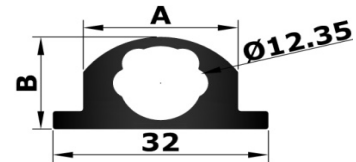
Section No.	Dimension in mm		Weight Kg/M.	W/T Range Kg/12'
	A	B		
700-0098	24.80	12.19	0.523	1.915-1.965
700-0126	24.50	12.30	0.477	1.750-1.850
700-0127	24.70	12.50	0.507	1.850-1.950



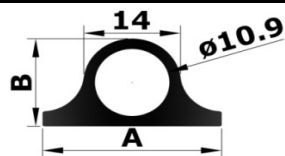
Section No.	Dimension in mm		Weight Kg/M.	W/T Range Kg/12'
	A	B		
700-0110	21.40	15.00	0.525	1.900-2.000



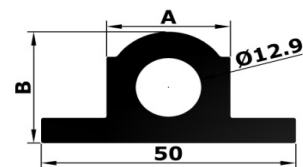
Section No.	Dimension in mm		Weight Kg/M.	W/T Range Kg/12'
	A	B		
700-0112	17.50	12.50	0.334	1.220-1.320



Section No.	Dimension in mm		Weight Kg/M.	W/T Range Kg/12'
	A	B		
700-0113	23.00	15.35	0.569	2.000-2.300

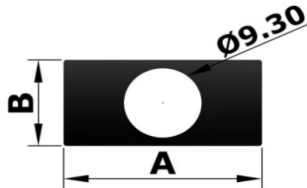


Section No.	Dimension in mm		Weight Kg/M.	W/T Range Kg/12'
	A	B		
700-0129	26.00	13.60	0.302	1.100-1.200
700-0130	26.10	13.90	0.329	1.200-1.300
700-0116	26.10	14.20	0.334	1.300-1.400
700-0117	26.30	14.50	0.383	1.400-1.500
700-0118	26.40	14.80	0.407	1.500-1.600

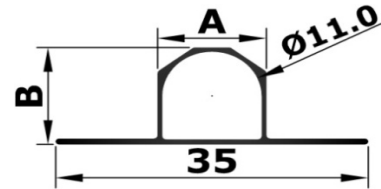


Section No.	Dimension in mm		Weight Kg/M.	W/T Range Kg/12'
	A	B		
700-0120	24.30	24.40	1.503	5.400-5.600

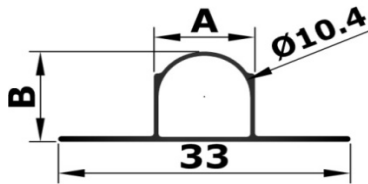
## TOWER BOLT



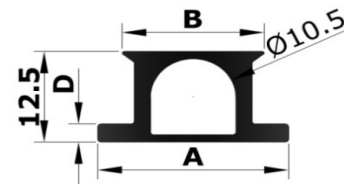
Section No.	Dimension in mm		Weight Kg/M.	W/T Range Kg/12'
	A	B		
700-0063	23.70	11.50	0.552	2.000-2.100



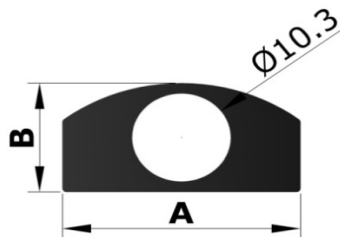
Section No.	Dimension in mm		Weight Kg/M.	W/T Range Kg/12'
	A	B		
700-0083	12.00	12.00	0.110	0.400-0.450



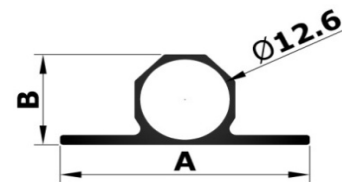
Section No.	Dimension in mm		Weight Kg/M.	W/T Range Kg/12'
	A	B		
700-0084	11.40	11.40	0.100	0.375-0.425



Section No.	Dimension in mm		Weight Kg/M.	W/T Range Kg/12'
	A	B		
700-0094	23.50	17.50	0.291	1.050-1.100



Section No.	Dimension in mm		Weight Kg/M.	W/T Range Kg/12'
	A	B		
700-0108	24.80	12.70	0.532	1.950-2.100

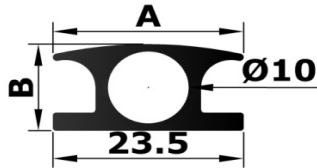


Section No.	Dimension in mm		Weight Kg/M.	W/T Range Kg/12'
	A	B		
700-0099	35.00	14.10	0.230	0.850-0.900

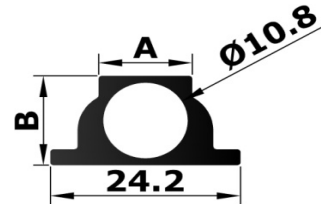
All dimensions are in mm.

Cat 2022-R1

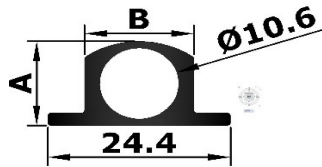
## TOWER BOLT



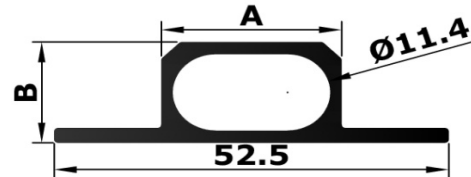
Section No.	Dimension in mm		Weight Kg/M.	W/T Range Kg/12'
	A	B		
700-0125	23.50	12.00	0.332	1.110-1.320



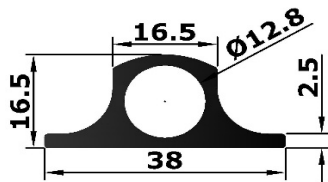
Section No.	Dimension in mm		Weight Kg/M.	W/T Range Kg/12'
	A	B		
700-0128	11.90	12.70	0.327	1.200-1.300



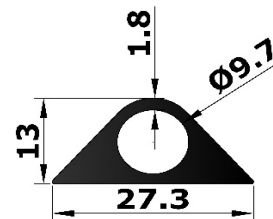
Section No.	Dimension in mm		Weight Kg/M.	W/T Range Kg/12'
	A	B		
700-0242	12.60	13.80	0.253	0.875-0.950
700-0131	14.60	12.60	0.282	1.040-1.100



Section No.	Dimension in mm		Weight Kg/M.	W/T Range Kg/12'
	A	B		
700-0137	24.00	15.00	0.561	0.515-0.610

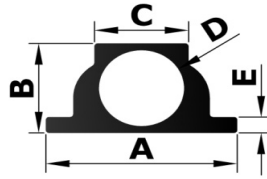


Section No.	Weight Kg/M.	W/T Range Kg/12'
700-0244	0.581	2.010-2.250

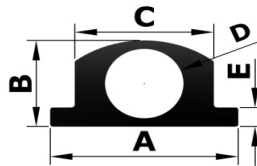


Section No.	Weight Kg/M.	W/T Range Kg/12'
700-0243	0.388	1.320-1.500

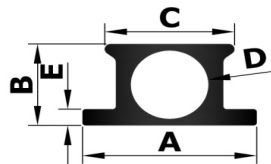
## TOWER BOLTS



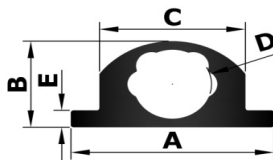
New Section No.	Dimension in mm					Weight kg/M.	Weight Range kg/12'
	A	B	C	D	E		
700-0229	24.20	12.70	11.30	10.80	2.15	0.300	1.100-1.200
700-0230	25.30	12.60	13.20	10.80	2.00	0.383	1.400-1.450
700-0231	25.30	12.60	18.20	10.80	2.00	0.355	1.300-1.400



New Section No.	Dimension in mm					Weight kg/M.	Weight Range kg/12'
	A	B	C	D	E		
700-0245	24.00	12.90	14.30	10.90	1.40	0.259	0.915-1.025
700-0232	24.40	12.60	14.20	10.60	1.90	0.273	1.000-1.100
700-0233	25.00	12.60	15.00	10.60	1.85	0.301	1.100-1.200
700-0234	25.00	12.60	16.00	10.60	2.00	0.328	1.200-1.300
700-0235	25.00	12.80	16.60	10.60	2.20	0.355	1.300-1.400

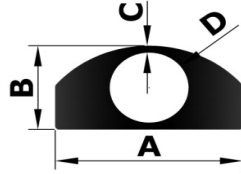


New Section No.	Dimension in mm					Weight kg/M.	Weight Range kg/12'
	A	B	C	D	E		
700-0236	23.20	12.50	17.00	10.50	2.33	0.302	1.100-1.200

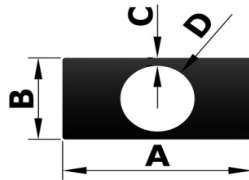


New Section No.	Dimension in mm					Weight kg/M.	Weight Range kg/12'
	A	B	C	D	E		
700-0237	32.00	15.35	18.50	15.35	2.40	0.451	1.650-1.750
700-0238	32.00	15.35	19.50	2.50	12.35	0.480	1.750-1.850

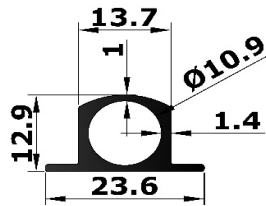
## TOWER BOLTS



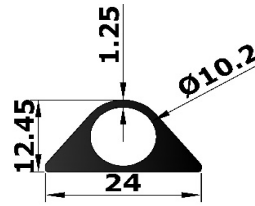
New Section No.	Dimension in mm				Weight kg/M.	Weight Range kg/12'
	A	B	C	D		
700-0239	24.00	12.30	1.00	10.30	0.452	1.650-1.750



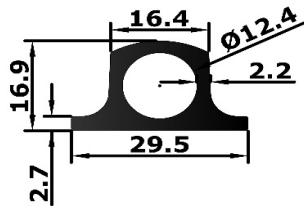
New Section No.	Dimension in mm				Weight kg/M.	Weight Range kg/12'
	A	B	C	D		
700-0240	22.80	11.30	1.00	9.30	0.519	1.900-2.000



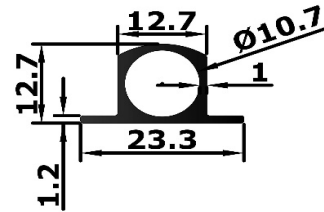
Section No.	Weight Kg/M.	W/T Range Kg/12'
700-0246	0.236	0.850-0.910



Section No.	Weight Kg/M.	W/T Range Kg/12'
700-0247	0.313	1.145-1.245

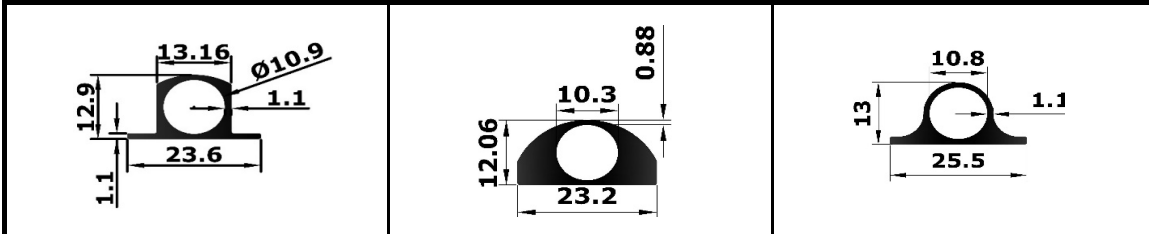


Section No.	Weight Kg/M.	W/T Range Kg/12'
700-0147	0.530	1.830-2.050

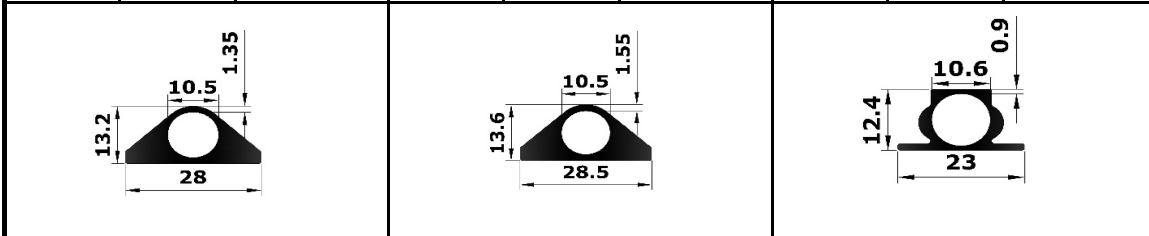


Section No.	Weight Kg/M.	W/T Range Kg/12'
700-0248	0.219	0.800-0.850

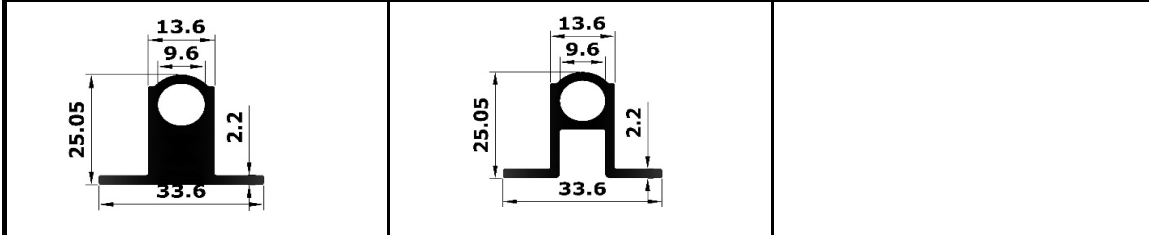
## TOWER BOLTS



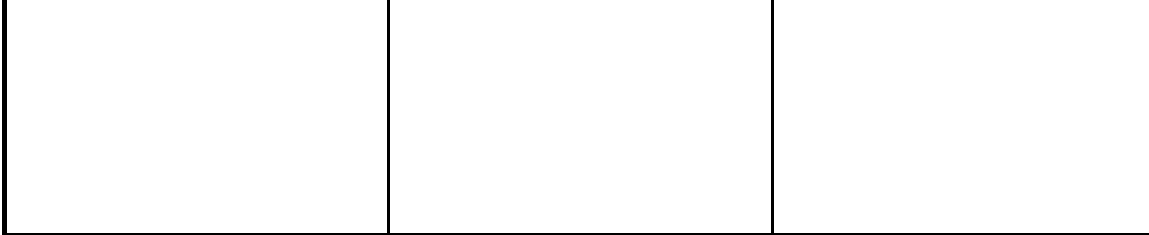
Section No.	Weight Kg/M	Weight Range kg/12'	Section No.	Weight Kg/M	Weight Range kg/12'	Section No.	Weight Kg/M	Weight Range kg/12'
700-0249	0.209	0.760-0.810	700-0250	0.397	1.450-1.530	700-0251	0.239	0.875-0.940



Section No.	Weight Kg/M	Weight Range kg/12'	Section No.	Weight Kg/M	Weight Range kg/12'	Section No.	Weight Kg/M	Weight Range kg/12'
700-0252	0.436	1.600-1.670	700-0253	0.479	1.730-1.800	700-0254	0.236	0.860-0.960



Section No.	Weight Kg/M	Weight Range kg/12'	Section No.	Weight Kg/M	Weight Range kg/12'			
700-0255	0.800	0.800-0.950	700-0256	0.502	0.500-0.650			



Section No.	Weight Kg/M	Weight Range kg/12'	Section No.	Weight Kg/M	Weight Range kg/12'			



Section No.	Weight Kg/M	Weight Range kg/12'	Section No.	Weight Kg/M	Weight Range kg/12'			

All dimensions are in mm.

Cat 2022-R1